

ANGUS WELLMASTER 150 and 250

For sizes 38mm (1 1/2") to 152mm (6")

Procedure for Coupling Assembly

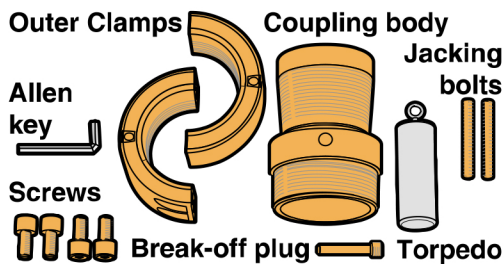
1. Introduction

This sheet covers the assembly procedure for couplings fitted to WELLMASTER 150 and WELLMASTER 250 products regardless of the coupling material used. Angus recommends that a break-off plug (BOP) is used but this may not suit every customer or installation.

Please also refer to the latest edition of the Wellmaster Installation Manual for more details

2. Assembly Procedure

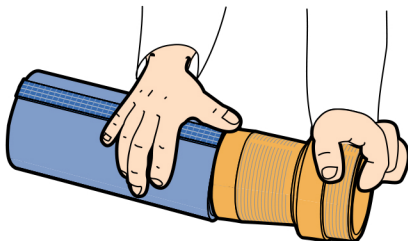
1.



Coupling Components

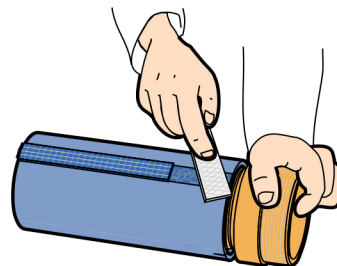
- Coupling Body with blanking plug.
- **Correct Type** outer half clamps with cap head screws.
- Jacking bolts (4" - 6" only, if required).
- Break-off plug (8mm Allen key) and torpedo.
- Break-off plug adaptor for 2" & 3". See 7.

2.



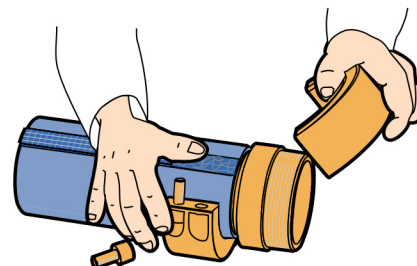
- Cut the end of the riser square with a knife or hacksaw.
- Push the riser onto the coupling body.
DO NOT LUBRICATE

3.



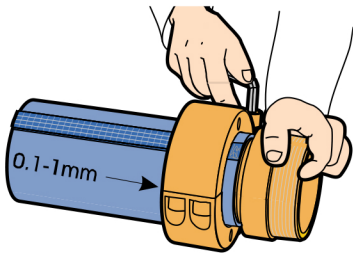
- Carefully file away the cable carrying strip until flush with the riser.

4.



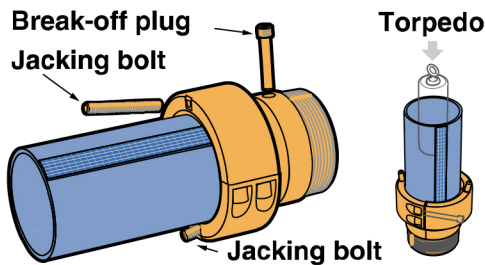
- Centrally locate the outer half clamps over the tapered section of the coupling body. This is likely to fall between 10mm and 20mm from the coupling body shoulder depending on riser diameter.
- **NOTE:** The grooved portion on the inside of the clamps should be located nearest to the coupling body shoulder end of the riser.

5.



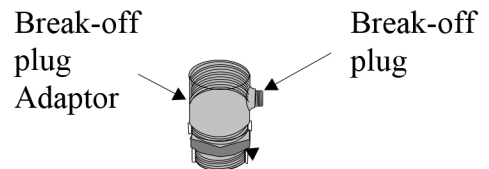
- Tighten the screws evenly to the recommended Torque setting. See 8.
- Ensure an even gap of 0.1 - 1mm between clamps. If the incorrect gap results, remove clamps and relocate nearer or further away from the coupling shoulder.

6.



- If jacking bolts are used, screw them through the outer clamps until they firmly locate against the shoulder.
- Remove the blanking plug and replace with the break-off plug. Tighten correctly

7.



- For 2" (51mm) and 3" (76mm) couplings, screw the break-off plug adaptor into the pump prior to attaching the coupling.

8.

SCREW TORQUE SETTINGS		
Diameter	Nm	Lb-ft
1 1/2" (38mm) – 4mm Allen key	5.0	3.7
2" (51mm) – 4mm Allen key	6.0	4.4
3" (76mm) – 6mm Allen key	14.0	10.0
4" (102mm) – 8mm Allen key	28.0	21.0
5" (127mm) – 10mm Allen key	46.0	34.0
6" (152mm) – 10mm Allen key	46.0	34.0
Blanking Plug/Break-off Plug	20.0	14.6

Angus Flexible Pipelines operates a continuous programme of product development. The right is therefore reserved to modify any specification without prior notice and Angus Flexible Pipelines should be contacted to ensure that the current issues of all technical data sheets are used.

© Angus Flexible Pipelines
FP5414/4/09.14